



Chiara DI PEDE, Giulia PALMIERI, Filippo CARDARELLI, Daniela DI VENERE, Francesco INCHINGOLO

Complex Operative Unit of Odontostomatology Director: Prof. G. FAVIA,
 Specialization School in ORTHOGNATODONTICS Director: Prof. F. INCHINGOLO,
 Interdisciplinary Department of Medicine D.I.M. University of Bari "Aldo Moro", Bari, Italy

INTERCEPTIVE THERAPY WITH ELASTODONTIC APPLIANCES A.M.C.O.P.[®] IN A PATIENT WITH DENTO-SKELETAL CLASS II: CASE REPORT

Aim: Elastodontics therapy represents a new approach of interceptive orthodontics that uses light and biological forces of an elastic type for orthopaedic and functional action. Aim of this report is to describe a case of a patient with dento-skeletal class II, treated with elastodontic appliances A.M.C.O.P.[®] (Harmonizer Multifunctional Cranial-Occlusion-Postural).

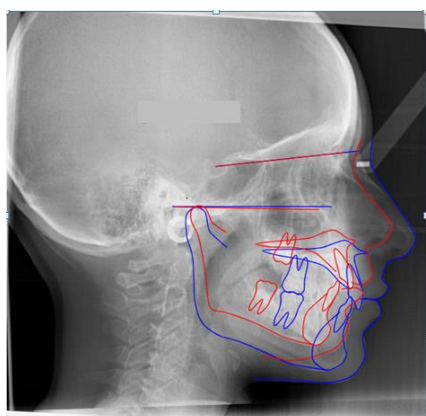
Materials and methods: a 5 years-old patient, female, in complete deciduous dentition, showed a dento-skeletal class II malocclusion (SNA 87, SNB 80, ANB 7, Wits 4mm), increased overjet (6mm) with lip incompetence and severe deep bite. First treatment plan included A.M.C.O.P.[®] Integral S for 10 months. For the second phase was prescribed a A.M.C.O.P.[®] SC (Second Class) for 18 months. The patient was instructed to use the appliances nighttime and one hour during the day for six months and then only during the night.



Results: at the end of the first phase the deep bite was corrected also with a right growth in the transverse dimension. After therapy with A.M.C.O.P.[®] SC, cephalometric analysis revealed the solution of skeletal class II malocclusion (SNA 82, SNB 78, ANB 4, Wits 0 mm) and a normal overjet, improving lip competence. On the left side persists a II class molar and canine relationships.

Conclusions: in the examined case the elastodontic therapy with A.M.C.O.P.[®] turned out to be effective to achieve therapeutic targets with a low impact on the compliance. Only a finishing phase is necessary for the correction of class II malocclusion on the left side with a AMCOP SC 61 shore for a more dental effect.

The Bioactivators are valid aids for early treatments, reconditioning the natural growth forces of neuro-musculo-skeletal system in order to correct malocclusions. In addition thermoplastic material makes Bioactivators extremely elastic, comfortable and suitable for any dental arch conformation.



SAGITTAL SKELETAL RELATIONSHIP

	T0	T2
Maxillary Position SNA	87°	82°
Mandibular Position SNB	80°	78°
Intermaxillary Relationship ANB	7°	4°
Wits Index AOBO (mm)	4 mm	0 mm



References

- Cardarelli, D.F. Il trattamento funzionale elastodontico con apparecchi AMCOP: Funzione, estetica e postura. 2019, 3.
- Laganà G.; Cozza P. Interceptive therapy with elastodontic appliance: case report
- Ortu, E.; Pietropaoli, D.; Cova, S.; Marci, M.C.; Monaco, A. Efficacy of elastodontic devices in overjet and overbite reduction assessed by computer-aid evaluation. BMC Oral Health 2021; 21:269
- Fichera, G.; Martina, S.; Palazzo, G.; Musumeci, R.; Leonardi, R.; Isola, G.; Lo Giudice, A. New Materials for Orthodontic Interceptive Treatment in Primary to Late Mixed Dentition. A retrospective Study Using Elastodontic Devices. Materials (Basel). 2021 Apr; 14(7): 1695